



# QUILLIAM

Romulus Court  
Brentford

- 24 hour security
- Communal central heating
- Communal hot water
- Available Now
- Unfurnished
- Brentford Dock
- One Double Bedroom
- Large Reception Room
- New Kitchen
- Bathroom

**£1,650 PCM**





## Property Description

A newly refurbished one-bedroom flat on Brentford Dock, recently painted throughout. The property features newly fitted kitchen door units, a new sink, worktop, and modern mixer taps in the bathroom. The attractive parquet flooring has been professionally re-sanded and revarnished. Additional improvements include a new fridge, new washing machine, energy-efficient LED kitchen lighting with under-unit lights, and a new shower unit.

There is the added bonus of having the heating and hot water included in the rent. The property comes completely unfurnished and is available now.

# Accommodation

Entrance Hall

Reception Room

Kitchen

Bathroom

Double Bedroom

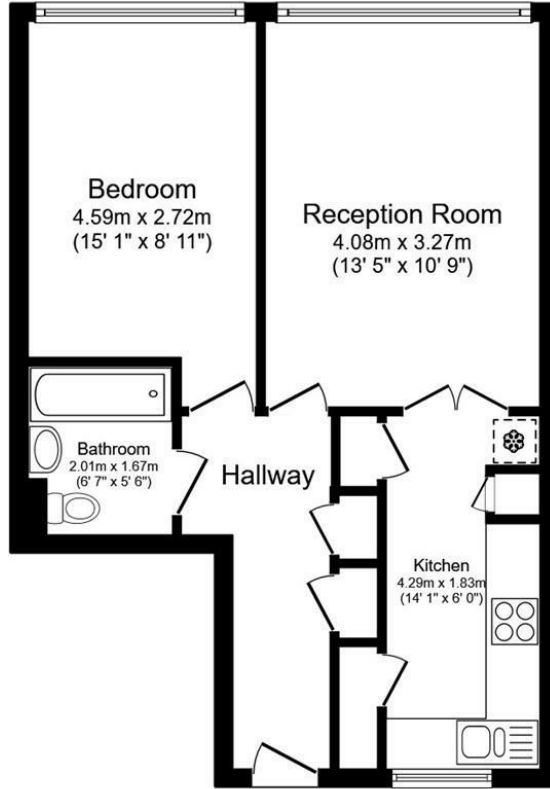


# Property Information

The property is to be let on an Assured Periodic Tenancy. Dilapidation's Deposit will be equivalent to five weeks rent. We have been informed by the Landlord of the following information:

London Borough of Hounslow Council Tax Band: C  
Council Tax Payable for 2026/27 £1,946.51 per annum  
The annual Council Tax charge has been supplied in good faith. It will likely be reviewed and changed by the Local Authority the following year and could be subject to an increase after the end of March.

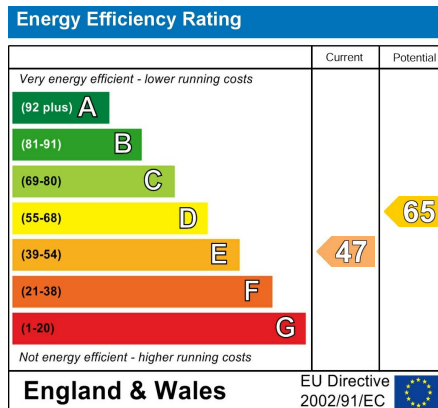




Floor Plan

Total floor area: 46.8 sq.m. (504 sq.ft.)

This floor plan is for illustrative purposes only. It is not drawn to scale. Any measurements, floor areas (including any total floor area), openings and orientations are approximate. No details are guaranteed, they cannot be relied upon for any purpose and do not form any part of any agreement. No liability is taken for any error, omission or misstatement. A party must rely upon its own inspection(s). Powered by www.Propertybox.io



206 High Street  
Brentford  
TW8 8AH

020 8847 4737  
info@quilliam.co.uk  
<https://www.quilliam.co.uk>

Agents Note: Whilst every care has been taken to prepare these particulars, they are for guidance purposes only. All measurements are approximate and are for general guidance purposes only and whilst every care has been taken to ensure their accuracy, they should not be relied upon and potential buyers/tenants are advised to recheck the measurements